

A dark, empty indoor sports hall with basketball hoops and a soccer goal. The floor is marked with white lines for various sports. The ceiling has several recessed lights.

SCOTTISH BORDERS FACILITIES AND PITCHES STRATEGY 2011

CONTENTS

Introduction	3
Purpose and Objective	4
Consultation	5
Highlighted Recommendations	6
Theme 2. Developing Facility Provision & Community Access	7
Action Plans	9
Contact	17

BORDERS SPORTS FACILITIES AND PITCHES STRATEGY

INTRODUCTION

A Sports Facility & Pitches Strategy is needed as part of a robust and objective assessment for the future provision of accessible high quality and financially sustainable facilities for sport and physical activity in Scottish Borders.

A strategy is also required as a key driver to partnerships and external funding providers.

Current levels of public provision, school facilities (joint provision/dual use) and voluntary sports clubs have been considered within the scope of the Strategy.



PURPOSE AND OBJECTIVE

The Council will, wherever possible, support the retention and improvement of services and facilities in settlements in accordance with the Development Strategy and will seek to ensure that access to services is maintained and enhanced.

Therefore, the Strategy has been developed to deliver the optimum spread, integration, usage and type of Facilities throughout the Borders and to do so on the basis of a considered and extensive engagement with the Borders Community.



CONSULTATION

The First Draft of a commissioned facility strategy report went out to an extended public consultation concluding in March 2011.



A series of public meetings were held across the Borders for communities to discuss and express their views on the First Draft of the Facility Strategy between January and March 2011. A conference of major stakeholders was held on 6th March to debate the first draft of the Facility Strategy. Feedback from the consultation process has been included in the Strategy.

The key points from the feedback on the report are:

Maintain local based facilities (health & access)	44%
Local facilities reduces transport needs	14%
Additional local facilities/investment required	10%
Reinvest more efficiencies	10%
Facilities required for local economy (Tourism etc)	8%
Facilities required for local diversionary activity (Crime etc)	2%
Increase use of existing Schools	2%
Prioritise Indoor Provision	2%
Agree with Report (in general)	2%
hierarchy of provision required	1%
Prioritise Young People	1%
Regional facility is required	1%
Review Target Sports required	1%

HIGHLIGHTED RECOMMENDATIONS

The following highlight recommendations are included within the Facilities strategy and are included within the Theme 2 Action Plan of the Borders Physical Activity Sport and Physical Education Strategy.



The foundation for the recommendations is the community consultation process and the Council's current Capital commitment

- Maintain the current level of Swimming Pools provision
- Produce a long term (10yrs +) sustainability plan for Pool provision
- Utilise the committed Capital resource [£280,000 / annum over the next 5 years] allocation to lever in and maximise external funding for refurbishment and development of facilities.
- Work with all partners towards the provision of a full size synthetic turf pitch within each cluster area in the Borders – including a commitment for a Peebles STP and Gala “3G” pitch’s

- Establish local facility access for each of the following key public facilities in each cluster:
 - Pools
 - Games Halls
 - Synthetic Turf Pitch’s
 - Grass Pitches
 - Fitness Facilities
- Develop a local facility plan and priorities across nine cluster area
- Review and recommend actions to improve access and opportunities for utilising Sports facilities at School venues.
- Raise awareness of Facilities available and what is on offer for Borders residents through effective marketing and communication of facility providers.

- Establish community hubs around shared facilities including Schools or Club facilities with a view to increasing income recovery and improved efficiency in facility provision.
- Work with all partners towards the long term aspiration of a Regional multi sport complex for the Borders
- Retain Grass Pitch provision and relate any development projects to SPP11
- Public facilities comply with Disability Discrimination Act (DDA) and encourage access for people with disabilities.

The outcomes and further actions for the development of facility provision and community access are detailed in the following attachments to the overall Physical Activity, Sport and PE Strategy.

THEME 2.

DEVELOPING FACILITY PROVISION & COMMUNITY ACCESS



By 2014 we will have:

Ensured that all new sporting facility provision is strategically planned for according to identified needs and expected growth areas. We will also have audited existing facility provision including pitches and open spaces which promote purposeful physical activity and sport in all of our communities.

Providing quality, appropriate and accessible facilities is key to getting more Borderers participating in purposeful activities and developing their sporting potential.

OUTCOME 2.1 - Borders communities have access to local facilities, key elements

- Implement the strategic plan supporting the priorities for the development, retention or expansion of community sport and recreational facilities.
- Support initiatives by voluntary & private sectors to develop new or improved sporting facilities
- 'School of the Future' model with community proofing applied to all new school designs and refurbishment programmes
- Pricing, access and booking procedures consistent across all SBC controlled school/ community facilities
- Strategic and policy planning is impact assessed

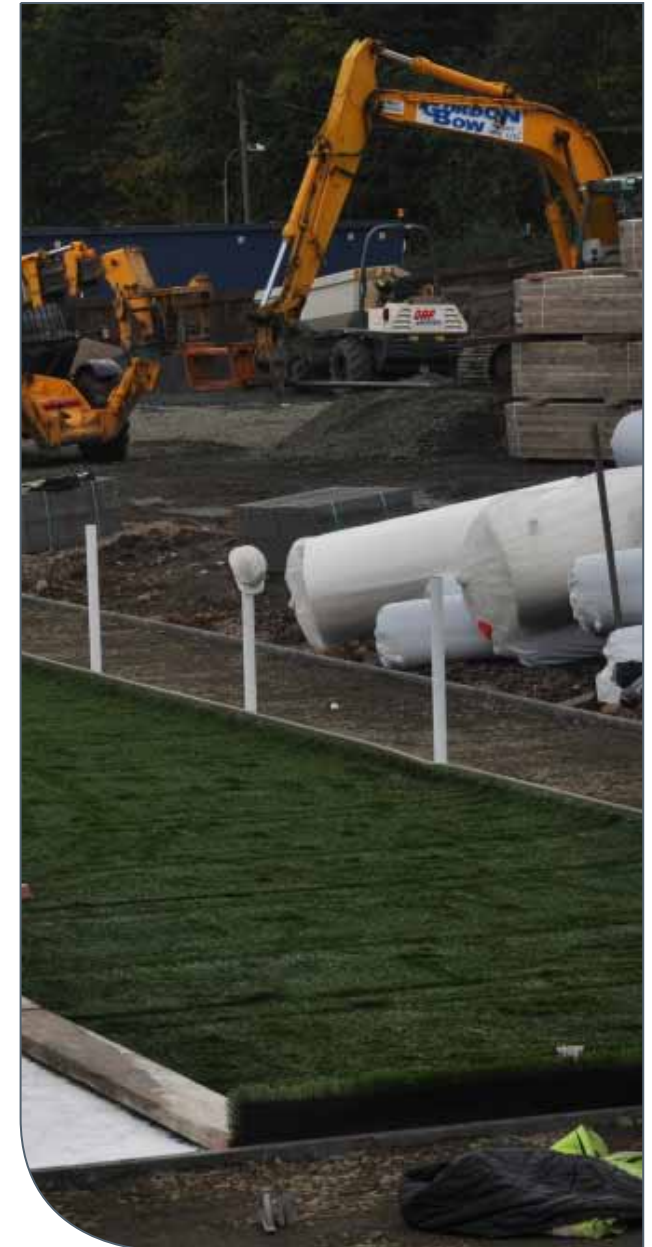
- Development of economically viable multi-use community facilities
- Ensure sound asset management is in place to maintain the facility as fit for purpose in meeting the needs of the community

OUTCOME 2.2 - High quality & innovative facilities are available in the Borders; key elements

- Improve establishment of multi-sport indoor facilities
- Increase the network of floodlit grass, multi-use, and synthetic surfaces
- Work with partners to deliver a local framework for specific facility provision and management
- Pitch's strategy implemented

OUTCOME 2.3 - The natural environment is utilised as an outdoor facility for physical activity & sport; key elements

- Increased provision of designated networks which support active travel
- Hosting of national / international events
- Identification of programmes & events using the natural environment



ACTION PLAN

DEVELOPING FACILITY PROVISION AND FACILITY ACCESS

DEVELOPMENT	ACTIONS	FINANCIAL/ RESOURCES	YEAR	RESPONSIBILITY /LEAD PARTNER
2.1 COMMUNITIES HAVE ACCESS TO LOCAL FACILITIES				
2.1.1 Implement the strategic plan supporting the priorities for the development, retention or expansion of community sport and recreational facilities	Maintain the current level of Swimming Pools provision	£1.578m	2011-15	BSLT, JLFT, BREST
	Utilise the committed Capital resource allocation to lever in and maximise external funding for refurbishment and development of facilities.	£280k	2011-15	BSLT, JLFT, BREST
	Produce a long term (10yrs +) sustainability plan for Pool provision	Nil	2015	SBC
	Develop a local facility plan and priorities across nine cluster area	Budget neutral	2011 2012 2014 2011 2011	All partners
	Establish local facility access for each of the following key public facilities in each cluster: <ul style="list-style-type: none"> • Pools • Games Halls • Synthetic Turf Pitch's • Grass Pitches • Fitness Facilities 	Budget neutral	2012	SBC SportBorders

ACTION PLAN

DEVELOPING FACILITY PROVISION AND FACILITY ACCESS

DEVELOPMENT	ACTIONS	FINANCIAL/ RESOURCES	YEAR	RESPONSIBILITY /LEAD PARTNER
2.1 COMMUNITIES HAVE ACCESS TO LOCAL FACILITIES				
2.1.2 Support initiatives by voluntary & private sectors to develop new or improved sporting facilities	Provide support advice and guidance for local clubs, groups and organisations developing or implementing Sports facility projects	Budget neutral	2011-15	BSLT
	Provide support to affiliated local Clubs and organisations for “small” projects through the Sports Council Grants scheme	£94K	2011-15	Sports Councils
	Provide approval for projects, evaluating for fit within the context of Borders PASPE Strategy	Budget neutral	2011-15	PASPE Forum
2.1.3 ‘School of the Future’ model with community proofing applied to all new school designs and refurbishment programmes	Implement design protocol for including community use and future use / demand for all School projects	Nil	2011-15	SBC
	Ensure community out of hours access to Schools	Budget neutral	2012	SBC
	Regular review of School model to update for policy change and stakeholder input.	Nil	Bi annual	SBC

ACTION PLAN

DEVELOPING FACILITY PROVISION AND FACILITY ACCESS

DEVELOPMENT	ACTIONS	FINANCIAL/ RESOURCES	YEAR	RESPONSIBILITY /LEAD PARTNER
2.1 COMMUNITIES HAVE ACCESS TO LOCAL FACILITIES				
2.1.4 Pricing, access and booking procedures consistent across all SBC controlled school/ community facilities	Review and recommend actions to improve access and opportunities for utilising Sports facilities at School venues.	Budget neutral	2012	SBC
	Review and assess pricing policy with all partners within the Business planning process of all public sector providers.	Budget neutral	2011-15	SBC/Trusts
	Investigate the potential of a single booking and payment system (including use of ICT and online technology) for public sector facilities.	+ resources required	2014	SBC/Trusts
	Raise awareness of Facilities available and what is on offer for Borders residents through effective marketing and communication of facility providers.	Budget neutral	2011 - 15	All partners
2.1.5 Strategic and policy planning is impact assessed	Public facilities comply with Disability Discrimination Act (DDA) and encourage access for people with disabilities	Nil	2011-15	SBC
	Strategy and policy is assessed for impact on Rural communities	Nil	2011-15	All Partners
	Strategy and policy is assessed for impact on equality.	Nil	2011-15	All Partners

ACTION PLAN

DEVELOPING FACILITY PROVISION AND FACILITY ACCESS

DEVELOPMENT	ACTIONS	FINANCIAL/ RESOURCES	YEAR	RESPONSIBILITY /LEAD PARTNER
2.1 COMMUNITIES HAVE ACCESS TO LOCAL FACILITIES				
2.1.6 Development of economically viable multi-use community facilities	Review annually the Facility Business plans within the Public sector	Nil	2011 – 15	SBC/Trusts
	Establish community hubs around shared facilities including Schools or Club facilities with a view to increasing income recovery and improved efficiency in facility provision.	Budget neutral	2011-15	All Trusts
	Provide support and guidance for community clubs and organisations in facility management.	Budget neutral	2011-15	All Trusts
2.1.7 Ensure sound asset management is in place to maintain the facility as fit for purpose in meeting the needs of the community	Maintain and review a condition survey of key facilities to identify future investment requirements	Budget neutral	2011-15	BSLT
	Evaluate the need for refurbishment or replacement	Nil	2011-15	All Trusts
	An inspection, maintenance, and refurbishment plan is to be put in place for all facilities in a business plan	Budget neutral	2011-15	All Trusts
	Equipment replacement is also planned	Budget neutral Nil	2011-15	All trusts
	An exit plan is put in place for end of life of all facilities for closure, rebuild, or replacement of services.	Budget neutral	2011-15	All Partners
	Customer feedback is built in to the asset management strategy for facilities	Nil	2011-15	All trusts

ACTION PLAN

DEVELOPING FACILITY PROVISION AND FACILITY ACCESS

DEVELOPMENT	ACTIONS	FINANCIAL/ RESOURCES	YEAR	RESPONSIBILITY /LEAD PARTNER
2.2 HIGH QUALITY AND INNOVATIVE FACILITIES ARE IN PLACE DEVELOPING POTENTIAL				
2.2.1 Improve establishment of multi-sport indoor facilities	Establish community hubs around shared facilities including Schools or Club facilities with a view to improving and promoting local opportunities and programs.	Budget neutral	2011-15	All Trusts
	Work with all partners towards the provision of a quality multi sport Games Hall within each cluster area in the Borders	+ resources required	2015 - 20	All Partners
	Work with all partners towards the long term aspiration of a Regional multi sport complex for the Borders	+ resources required	2020	All Partners
2.2.2 Increase the network of floodlit grass, multi-use, and synthetic surfaces	Work with all partners towards the provision of a full size synthetic turf pitch within each cluster area in the Borders		2015 – 20	All Partners
	Peebles & Gala – planned	£2.1m + resources required		
	Support community projects for the establishment of Multi Use games Areas and Ball Courts prioritising outlying communities of more than 10 mins. drive time of Cluster Towns.	Budget neutral	2011-15	BSLT
	Support community projects extending the capacity of existing outdoor facilities with the addition of ancillary facilities including Lights, Changing, and Storage.	Budget neutral	2011-15	BSLT

ACTION PLAN

DEVELOPING FACILITY PROVISION AND FACILITY ACCESS

DEVELOPMENT	ACTIONS	FINANCIAL/ RESOURCES	YEAR	RESPONSIBILITY /LEAD PARTNER
2.2 HIGH QUALITY AND INNOVATIVE FACILITIES ARE IN PLACE DEVELOPING POTENTIAL				
2.2.3 Work with partners to deliver a local framework for specific facility provision and management	Community Hubs and partnerships supported and developed to establish local priorities and approaches to facility provision and management	Budget neutral	2011-15	All Trusts
	Establish a project management protocol and communication plan for all facility development.	Budget neutral	2011-15	All partners
	Ensure a competent project manager is in place to implement agreed new developments to a high standard	Budget neutral	2011-15	All Partners
	Establish a source of funds to resource the development of facility provision for feasibility work, matching external funders, and, stand alone projects	+ resources required	2011-15	All partners

ACTION PLAN

DEVELOPING FACILITY PROVISION AND FACILITY ACCESS

DEVELOPMENT	ACTIONS	FINANCIAL/ RESOURCES	YEAR	RESPONSIBILITY /LEAD PARTNER
2.2 HIGH QUALITY AND INNOVATIVE FACILITIES ARE IN PLACE DEVELOPING POTENTIAL				
2.2.4 Pitch's strategy implemented	Retain Grass Pitch provision and relate any development projects to SPP11	Budget neutral	2011-15	SBC
	Pitch dimensions should consider the SportScotland guidelines	Nil	2011-15	All Partners
	Support Sport pathways through assisting clubs and their specific league requirements.	Budget neutral	2011-15	All Partners
	Establish facility service plan and business plan for all new and existing facilities.	Nil	2011-15	All partners
	Increase capacity and quality of current facility provision within the local facility planning framework through community engagement	Budget neutral	2011-15	All Partners
	Prioritise key facilities facilitating sustainable club and organisational programmes and sports pathways.	Budget neutral	2011-15	All Partners
	Ensure partnership working and community engagement on all plans and developments for best practice and best value on new developments.	Budget neutral	2011-15	All Partners
	Explore options for alternative approaches to management of facilities including leases.	Budget neutral	2011-15	All Partners

ACTION PLAN

DEVELOPING FACILITY PROVISION AND FACILITY ACCESS

DEVELOPMENT	ACTIONS	FINANCIAL/ RESOURCES	YEAR	RESPONSIBILITY /LEAD PARTNER
2.3 THE NATURAL ENVIRONMENT AS AN OUTDOOR FACILITY SUPPORTS PHYSICAL ACTIVITY AND SPORT				
2.3.1 Increased provision of designated networks which support active travel	Mapping of networks – to be circulated to all stakeholder groups	Nil	2011	SBC
	Establish targets for provision within each network and local access from settlements to networks	Budget neutral	2011-15	SBC
	Identify priorities for enhancement and extension of networks.	Budget neutral	2011-15	All Partners
	Networks to be linked through the facility network for support services, programmes (e.g. Natural Connections and Outdoor learning), and information.	Budget neutral	2011-15	SBC
2.3.2 Hosting of national / international events	Evaluation of event strategy targets against facility provision.	Budget neutral	2011-15	All Partners
	Provide input to design team brief for facility “legacy” planning	Nil	2011-15	All Partners
	Audit venues for potential capacity to host events.	Budget neutral	2011-15	All Partners
2.3.3 Identification of programmes & events using the natural environment	Provide plans for enhancing facilities that have the potential to host major events	Budget neutral	2011-15	All Partners
	Develop facilities for the economic benefit of the wider community on the basis of cost/benefit to the Borders	Budget neutral	2011-15	All Partners
	Support initiative for “Green Gyms” providing for local outdoor Health & Fitness programmes	+ resources required	2011-15	All partners

CONTACT

You can get this document on tape, in large print, and various other formats by contacting us at the address below. In addition, contact the address below for information on language translations, additional copies, or to arrange for an officer to meet with you to explain any areas of the publication that you would like clarified.

EDUCATION

Max Arthur | Policy & Performance Officer (Physical Activity, Sport, & PE)
Scottish Borders Council | Newtown St Boswells | MELROSE | TD6 0SA
tel: 01835 825160 | www.scotborders.gov.uk